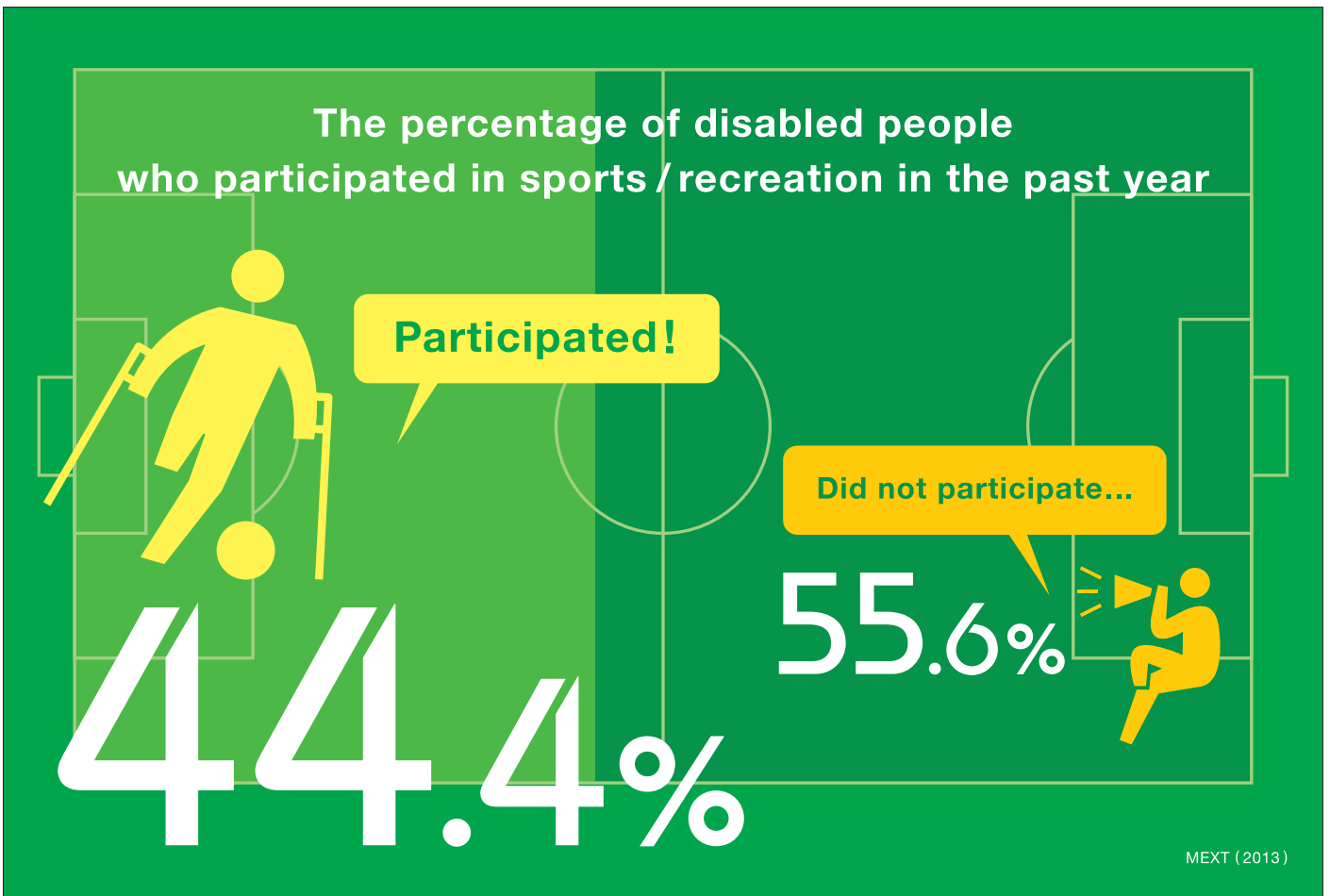




Photo : X-1





 SASAKAWA SPORTS FOUNDATION

Photo: X-1

The percentage of people who participated in sports / recreation in the past year (20+ years old)

Japanese population

People with disabilities



at least One day a week

47.5%

18.2%

Sports and Physical Fitness Poll (2013)

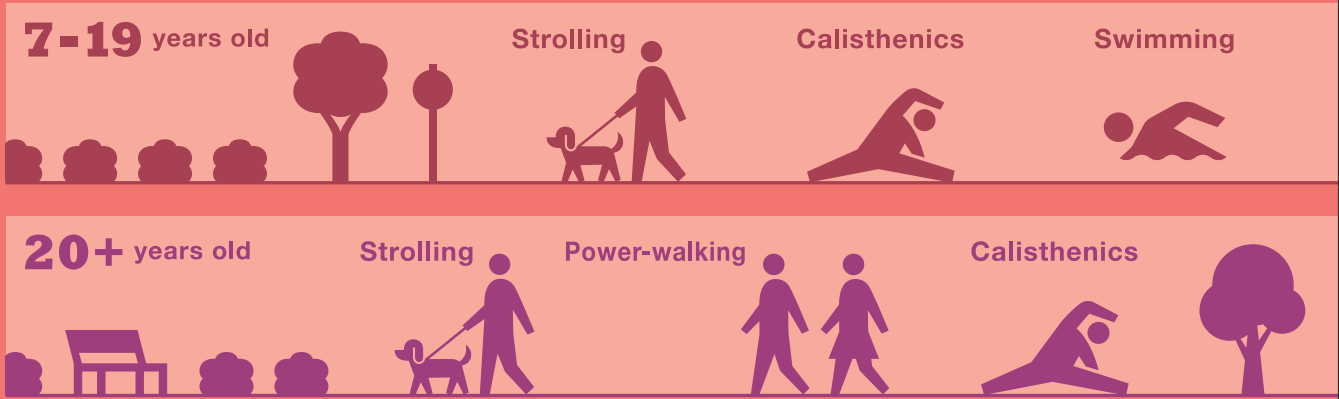
MEXT (2013)



 SASAKAWA SPORTS FOUNDATION

Photo: Tokyo Metropolitan Sports Association for the Disabled

Sport / activity disabled people participated in in the past year



Barriers to participation

No energy!

No time!

No money!

But the biggest issue is

No interest!

! Increasing the appeal of sports is a priority



Photo : Tokyo Metropolitan Sports Association for the Disabled

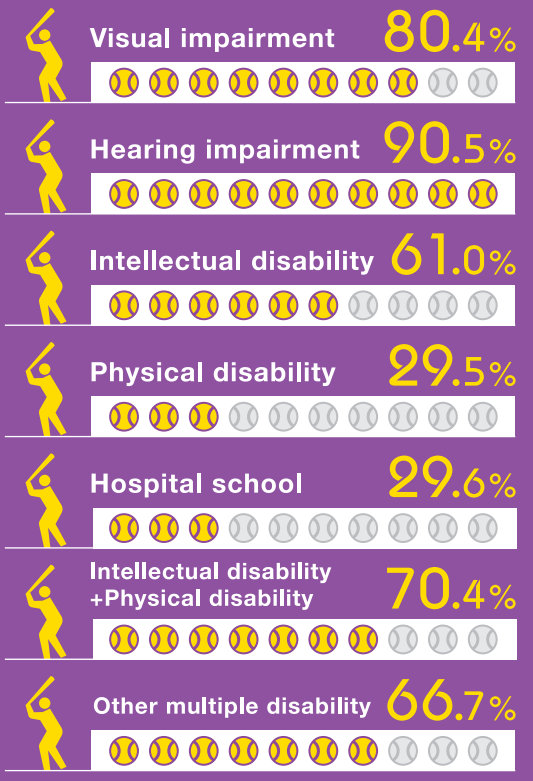
Opportunities for sports outside of physical education at special schools

60.8%

of special schools provide sports clubs and other club activities



Special school sports club opportunities by school type





 SASAKAWA SPORTS FOUNDATION

Photo : X-1

Physical activities implemented within high school sports clubs at special schools

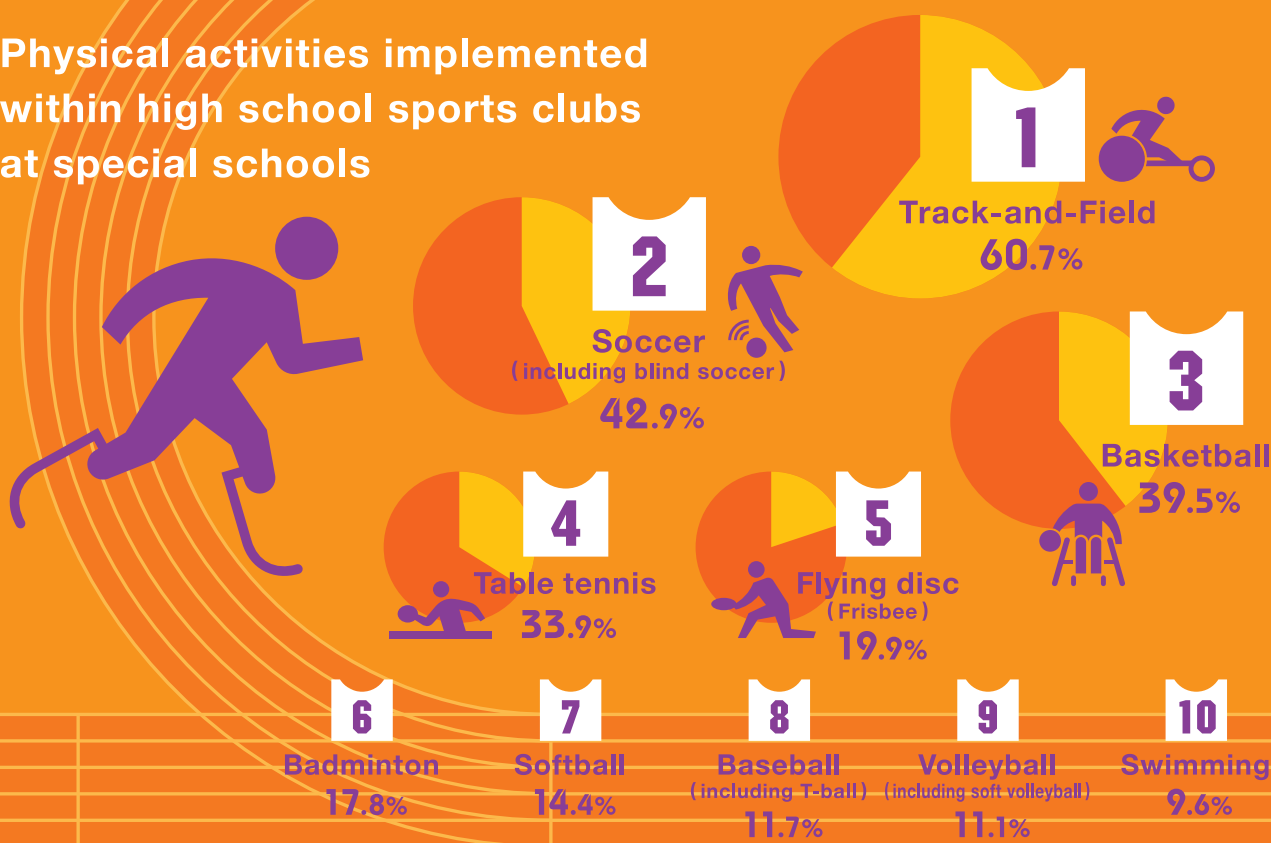
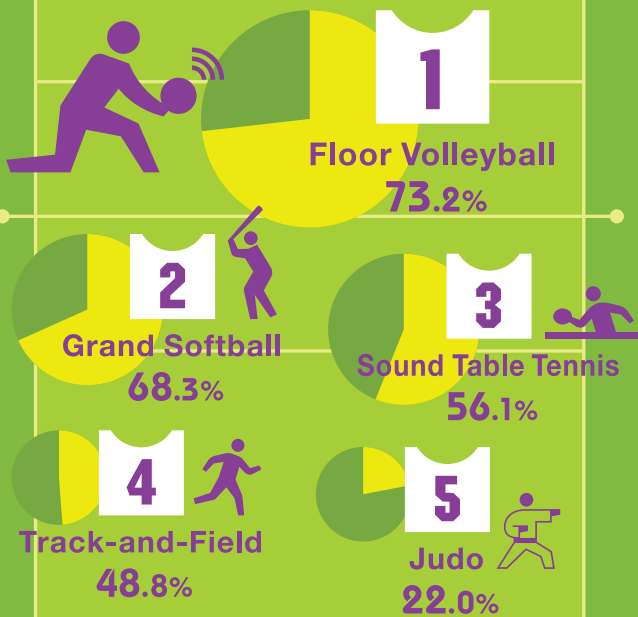




Photo : X-1

Physical activities implemented within high school sports clubs at special schools (by school type)

Schools for visually impaired



MEXT (2013)

Schools for physically disabled

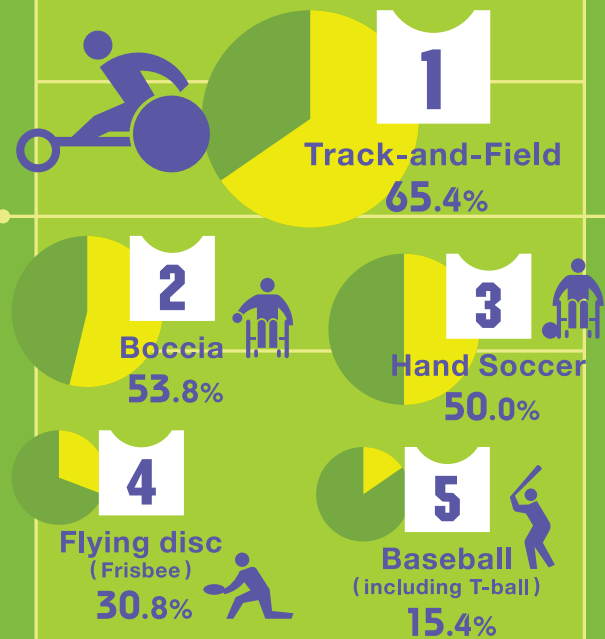




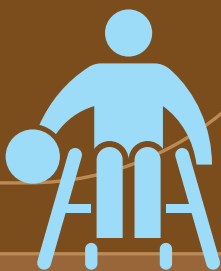
Photo : X-1

Number of disability sports facilities in Japan in 2012

Sports facilities for people with disabilities

114 

Disability sports facilities are facilities that allow people with disabilities to have exclusive or priority access



19 
Kyushu

16 
Chushikoku

8 
Hokushinetsu

14 
Tohoku

22 
Kinki

12 
Chubu-Tokai

20 
Kanto

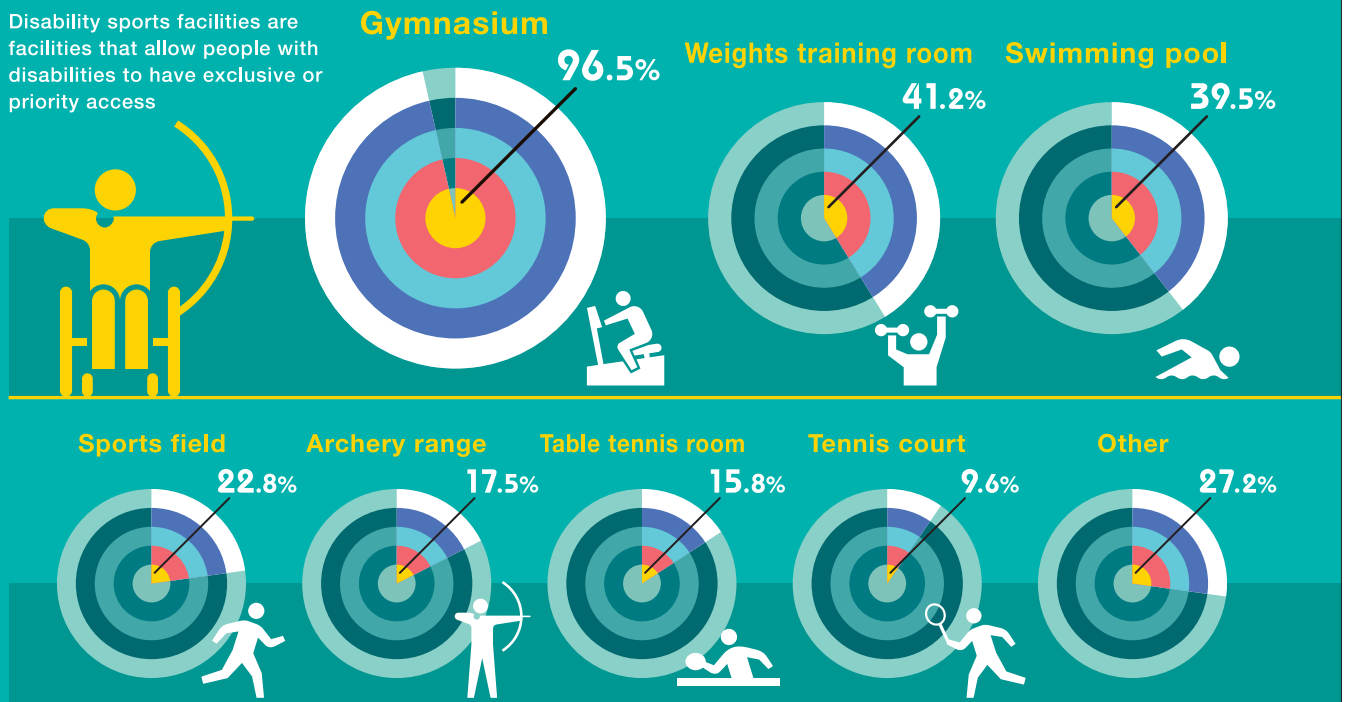
3 
Hokkaido



Photo : X-1

Types and percentage of facilities adjoined to 114 disability sports facilities in 2012

Disability sports facilities are facilities that allow people with disabilities to have exclusive or priority access

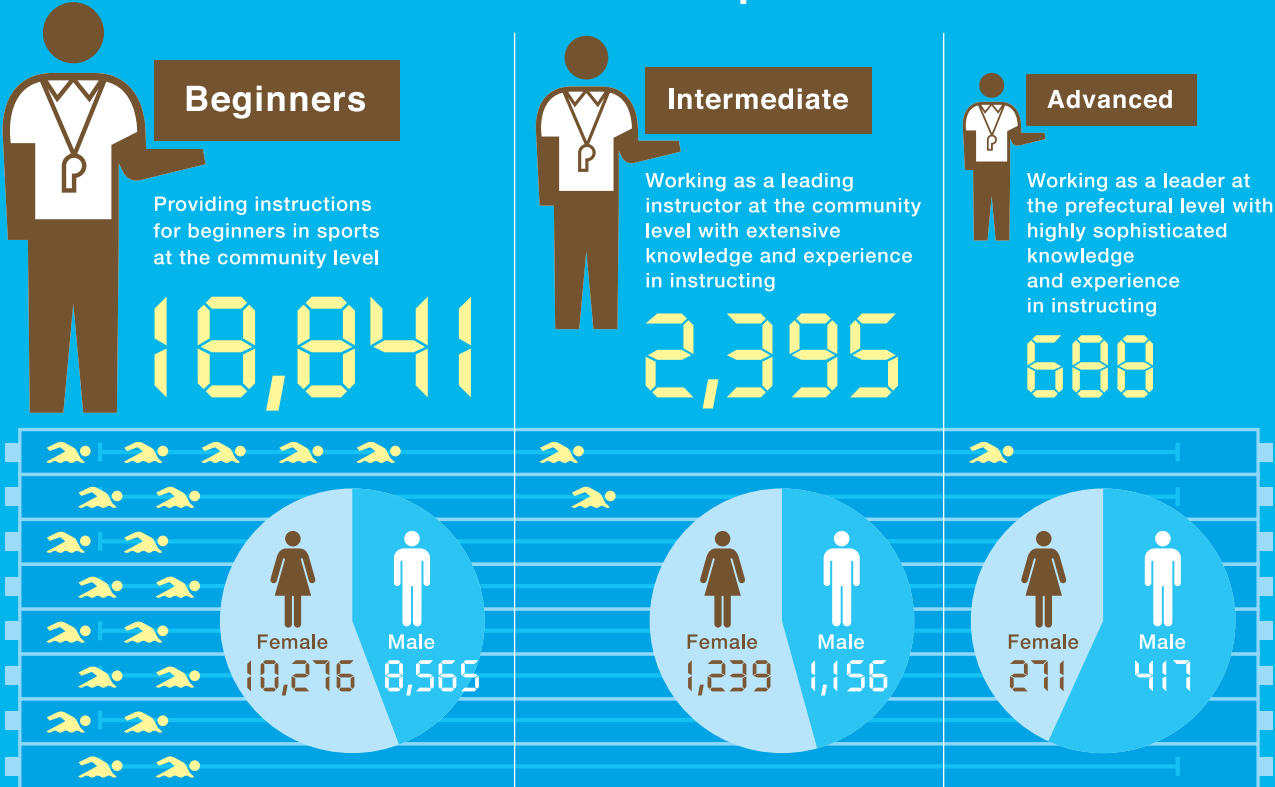




 SASAKAWA SPORTS FOUNDATION

Photo : X-1

Overview of JPSSA*'s Para-Sports instructors in FY2011



*Japanese Para-Sports Association

JPSA (2011, 2012) MEXT (2012)



Photo: X-1

The breakdown of Para-Sports instructors by qualification

(by age group, in FY2011)

